



Certification Report

TOMITA Tatsuo, Chairman
Information-technology Promotion Agency, Japan
2-28-8 Honkomagome, Bunkyo-ku, Tokyo

IT Product (TOE)

Reception Date of Application (Reception Number)	2022-07-11 (ITC-2824)
Certification Identification	JISEC-C0772
Product Name	SHARP BP-70M65 / 70M55 / 70M45 fax-standard PS-optional model with BP-FR12U and MX-PK13; BP-70M65 / 70M55 / 70M45 / 70M36 / 70M31 fax-optional PS-standard model with BP-FR12U and BP-FX11; and BP-50M65 / 50M55 / 50M45 / 50M36 / 50M31 / 50M26 fax-optional PS-optional model with BP-FR12U, MX-PK13 and BP-FX11
Version and Release Numbers	0240Q100
Product Manufacturer	SHARP CORPORATION
Conformance of Functionality	PP conformant functionality, CC Part 2 Extended
Protection Profile Conformance	Protection Profile for Hardcopy Devices 1.0 dated September 10, 2015 (Certification Identification: JISEC-C0553)
Name of IT Security Evaluation Facility	Information Technology Security Center, Evaluation Department

This is to report that the evaluation result for the above TOE has been certified as follows.
2023-02-20

YANO Tatsuro, Technical Manager
IT Security Technology Evaluation Department
IT Security Center

Evaluation Criteria, etc.: This TOE is evaluated in accordance with the following standards prescribed in the "IT Security Evaluation and Certification Scheme Document."

- Common Criteria for Information Technology Security Evaluation Version 3.1 Release 5
- Common Methodology for Information Technology Security Evaluation Version 3.1 Release 5

Evaluation Result: Pass

"SHARP BP-70M65 / 70M55 / 70M45 fax-standard PS-optional model with BP-FR12U and MX-PK13; BP-70M65 / 70M55 / 70M45 / 70M36 / 70M31 fax-optional PS-standard model

with BP-FR12U and BP-FX11; and BP-50M65 / 50M55 / 50M45 / 50M36 / 50M31 / 50M26 fax-optional PS-optional model with BP-FR12U, MX-PK13 and BP-FX11, Version 0240Q100" has been evaluated based on the standards required, in accordance with the provisions of the "Requirements for IT Security Certification" by Information-technology Promotion Agency, Japan, and has met the specified assurance requirements.

Notice:

This document is the English translation version of the Certification Report published by the Certification Body of Japan Information Technology Security Evaluation and Certification Scheme.

Table of Contents

1	Executive Summary	1
1.1	Product Overview	1
1.1.1	Protection Profile or Assurance Package.....	1
1.1.2	TOE and Security Functionality.....	1
1.1.2.1	Threats and Security Objectives.....	2
1.1.2.2	Configuration and Assumptions	2
1.1.3	Disclaimers	2
1.2	Conduct of Evaluation.....	3
1.3	Certification	3
2	Identification.....	4
3	Security Policy	6
3.1	Users.....	6
3.2	Assets	6
3.3	Threats	7
3.4	Organizational Security Policies	8
4	Assumptions and Clarification of Scope	9
4.1	Usage Assumptions	9
4.2	Environmental Assumptions	10
4.3	Clarification of Scope	11
5	Architectural Information.....	12
5.1	TOE Boundary and Components	12
5.2	IT Environment.....	14
6	Documentation.....	15
7	Evaluation conducted by Evaluation Facility and Results	16
7.1	Evaluation Facility.....	16
7.2	Evaluation Approach.....	16
7.3	Overview of Evaluation Activity.....	16
7.4	IT Product Testing.....	17
7.4.1	Developer Testing.....	17
7.4.2	Evaluator Independent Testing	17
7.4.3	Evaluator Penetration Testing.....	20
7.5	Evaluated Configuration	21
7.6	Evaluation Results	21
7.7	Evaluator Comments/Recommendations	22
8	Certification	23
8.1	Certification Result	23
8.2	Recommendations	23

9 Annexes 24

10 Security Target..... 24

11 Glossary 25

12 Bibliography 27

1 Executive Summary

This Certification Report describes the content of the certification result in relation to IT Security Evaluation of "SHARP BP-70M65 / 70M55 / 70M45 fax-standard PS-optional model with BP-FR12U and MX-PK13; BP-70M65 / 70M55 / 70M45 / 70M36 / 70M31 fax-optional PS-standard model with BP-FR12U and BP-FX11; and BP-50M65 / 50M55 / 50M45 / 50M36 / 50M31 / 50M26 fax-optional PS-optional model with BP-FR12U, MX-PK13 and BP-FX11, Version 0240Q100" (hereinafter referred to as the "TOE") developed by SHARP CORPORATION, and the evaluation of the TOE was completed on 2023-01-20 by Information Technology Security Center, Evaluation Department (hereinafter referred to as the "Evaluation Facility"). It is intended to report to the sponsor, SHARP CORPORATION, and provide security information to procurement entities and consumers who are interested in the TOE.

Readers of the Certification Report are advised to read the Security Target (hereinafter referred to as the "ST") described in Chapter 10. Especially, details of security functional requirements, assurance requirements and rationale for sufficiency of these requirements of the TOE are described in the ST.

This Certification Report assumes procurement entities who purchase the TOE to be readers. Note that the Certification Report presents the certification result based on assurance requirements to which the TOE conforms, and does not guarantee an individual IT product itself.

1.1 Product Overview

An overview of the TOE functions and operational conditions is described as follows. Refer to Chapter 2 and subsequent chapters for details.

1.1.1 Protection Profile or Assurance Package

The TOE conforms to the following Protection Profile [14][15] (hereinafter referred to as the "Conformance PP").

Protection Profile for Hardcopy Devices 1.0 dated September 10, 2015
(Certification Identification: JISEC-C0553)

1.1.2 TOE and Security Functionality

This TOE is a digital multifunction device (hereinafter referred to as "MFD") equipped with multiple functions such as copying, printing, scanning, faxing, and saving/retrieving document data (referred to as "document filing function" in this TOE).

The TOE provides security functions required by the Conformance PP to prevent the document data processed by the MFD and the setting data etc. affecting security from unauthorized disclosure and alteration.

For these security functions, the validity of the design policy and the accuracy of the implementation were evaluated within the scope of the assurance requirements of the Conformance PP.

Threats and assumptions assumed for the TOE are described in the following sections.

1.1.2.1 Threats and Security Objectives

The following threats are assumed for the TOE.

There are threats that user document data and data affecting security functions, which are assets to be protected by the TOE, may be disclosed or altered by unauthorized operation of the TOE or unauthorized access to the network to which the TOE is connected.

There are also threats that security functions of the TOE may be compromised by the failure of the TOE itself or installation of unauthorized software.

The TOE provides security functions required by the Conformance PP such as identification and authentication, access control, encryption, and digital signature to counter these threats.

1.1.2.2 Configuration and Assumptions

The TOE is assumed to be operated under the following configuration and assumptions.

It is assumed that the TOE is operated in the environment where unauthorized physical access is restricted and it is connected to a LAN separated from the Internet.

The setting, administration and maintenance of the TOE must be performed in accordance with the guidance documents by a trusted administrator. Users of the TOE must have been trained in order to use the TOE securely.

1.1.3 Disclaimers

The following operation is not ensured by this evaluation:

- An environment different from that described in "4.2 Environmental Assumptions"
- TOE with settings different from those described in "7.5 Evaluated Configuration"

1.2 Conduct of Evaluation

Under the IT Security Evaluation and Certification Scheme that the Certification Body operates, the Evaluation Facility conducted IT security evaluation and completed in 2023-01, based on functional requirements and assurance requirements of the TOE according to the publicized documents "IT Security Evaluation and Certification Scheme Document"[1], "Requirements for IT Security Certification"[2], and "Requirements for Approval of IT Security Evaluation Facility"[3] provided by the Certification Body.

1.3 Certification

The Certification Body verified the Evaluation Technical Report [13] and the Observation Reports prepared by the Evaluation Facility as well as evaluation documentation, and confirmed that the TOE evaluation was conducted in accordance with the prescribed procedure. The certification oversight reviews were also prepared for those concerns found in the certification process. The Certification Body confirmed that all the concerns were fully resolved, and that the TOE evaluation had been appropriately conducted in accordance with the CC ([4][5][6] or [7][8][9]) and the CEM (either of [10][11]). The Certification Body prepared this Certification Report based on the Evaluation Technical Report and fully concluded certification activities.

2 Identification

The TOE is identified as follows:

TOE Name: SHARP BP-70M65 / 70M55 / 70M45 fax-standard PS-optional model with BP-FR12U and MX-PK13; BP-70M65 / 70M55 / 70M45 / 70M36 / 70M31 fax-optional PS-standard model with BP-FR12U and BP-FX11; and BP-50M65 / 50M55 / 50M45 / 50M36 / 50M31 / 50M26 fax-optional PS-optional model with BP-FR12U, MX-PK13 and BP-FX11

TOE Version: 0240Q100

Users can verify that a product is the TOE, which is evaluated and certified, by the following means.

Users confirm the following information as described in the guidance document.

- Developer Name

The developer name displayed on the casing of the TOE shall be "SHARP".

- Model number of Main unit

The model number of main unit displayed on the casing of the TOE shall be one of those listed in "Model number of Main unit" field of Table 2-1 corresponding to the TOE's sales area.

- Fax

The character string ("STANDARD" or "NONE") in the "Fax" field of Table 2-1 corresponding to the TOE's sales area and model number of main unit shall be displayed in "FAX" field on the TOE operation panel.

- Postscript

The character string ("STANDARD" or "NONE") in the "Postscript" field of Table 2-1 corresponding to the TOE's sales area and model number of main unit shall be displayed in "PS" field on the TOE operation panel.

- Mandatory option

All character strings in the "Mandatory option" field of Table 2-1 corresponding to the TOE's sales area and model number of main unit shall be displayed in the option name on the TOE operation panel.

- Version

The TOE version displayed on the operation panel shall match the TOE identification version.

Table 2-1 TOE Components

Sales area	Model number of main unit	Fax	Postscript	Mandatory option
Japan	BP-70M65 BP-70M55 BP-70M45	STANDARD	NONE	BP-FR12U MX-PK13
Other than Japan	BP-70M65 BP-70M55 BP-70M45 BP-70M36 BP-70M31	NONE	STANDARD	BP-FR12U BP-FX11
Other than Japan	BP-50M65 BP-50M55 BP-50M45 BP-50M36 BP-50M31 BP-50M26	NONE	NONE	BP-FR12U MX-PK13 BP-FX11

3 Security Policy

The TOE provides the basic functions of the MFD such as copy, printer, scanner, fax, and document filing. It has the functionality to store the user document data in the TOE and to communicate with user terminals and various servers via a network. It has the functionality to store the user document data in the TOE and to communicate with user terminals and various servers via a network.

The TOE provides security functions that satisfy the requirements of the Conformance PP, to protect the document data processed by the MFD and setting data etc. affecting security.

As the background of the security functions provided by the TOE, user roles, assets, threats, and organizational security policies assumed for the TOE are described in following Section 3.1 to 3.4. Details of the security functions of the TOE are described in Chapter 5.

3.1 Users

The user roles assumed for the TOE are shown in Table 3-1.

Table 3-1 User Roles

Designation	Definition
Normal User	A User who has been identified and authenticated and does not have an administrative role
Administrator	A User who has been identified and authenticated and has an administrative role

3.2 Assets

The assets assumed to be protected by the TOE are shown in Table 3-2, Table 3-3 and Table 3-4. There are two categories of the assets, User Data and TSF Data, as shown in Table 3-2. Furthermore, User Data is classified as shown in Table 3-3 and TSF Data is as shown in Table 3-4.

Table 3-2 Assets

Designation	Asset category	Definition
D.USER	User Data	Data created by and for Users that do not affect the operation of the TSF
D.TSF	TSF Data	Data created by and for the TOE that might affect the operation of the TSF

Table 3-3 Assets (User Data)

Designation	User Data Type	Definition
D.USER.DOC	User Document Data	Information contained in a User's Document, in electronic or hardcopy form
D.USER.JOB	User Job Data	Information related to a User's Document or Document Processing Job

Table 3-4 Assets (TSF Data)

Designation	TSF Data Type	Definition
D.TSF.PROT	Protected TSF Data	TSF Data for which alteration by a User who is neither the data owner nor in an Administrator role might affect the security of the TOE, but for which disclosure is acceptable
D.TSF.CONF	Confidential TSF Data	TSF Data for which either disclosure or alteration by a User who is neither the data owner nor in an Administrator role might affect the security of the TOE

3.3 Threats

The threats assumed for the TOE are shown in Table 3-5.

Table 3-5 Threats

Designation	Definition
T.UNAUTHORIZED_ACCESS	An attacker may access (read, modify, or delete) User Document Data or change (modify or delete) User Job Data in the TOE through one of the TOE's interfaces.
T.TSF_COMPROMISE	An attacker may gain Unauthorized Access to TSF Data in the TOE through one of the TOE's interfaces.
T.TSF_FAILURE	A malfunction of the TSF may cause loss of security if the TOE is permitted to operate.
T.UNAUTHORIZED_UPDATE	An attacker may cause the installation of unauthorized software on the TOE.
T.NET_COMPROMISE	An attacker may access data in transit or otherwise compromise the security of the TOE by monitoring or manipulating network communication.

3.4 Organizational Security Policies

The organizational security policies required for the TOE are shown in Table 3-6.

Table 3-6 Organizational Security Policies

Designation	Definition
P.AUTHORIZATION	Users must be authorized before performing Document Processing and administrative functions.
P.AUDIT	Security-relevant activities must be audited and the log of such actions must be protected and transmitted to an External IT Entity.
P.COMMS_PROTECTION	The TOE must be able to identify itself to other devices on the LAN.
P.STORAGE_ENCRYPTION	If the TOE stores User Document Data or Confidential TSF Data on Field-Replaceable Nonvolatile Storage Devices, it will encrypt such data on those devices.
P.KEY_MATERIAL	Cleartext keys, submasks, random numbers, or any other values that contribute to the creation of encryption keys for Field-Replaceable Nonvolatile Storage of User Document Data or Confidential TSF Data must be protected from unauthorized access and must not be stored on that storage device.
P.FAX_FLOW	If the TOE provides a PSTN fax function, it will ensure separation between the PSTN fax line and the LAN.

4 Assumptions and Clarification of Scope

This chapter describes the assumptions and the operational environment to operate the TOE as useful information for the assumed readers to determine whether to use the TOE.

4.1 Usage Assumptions

Table 4-1 shows assumptions to operate the TOE. The effective performances of the TOE security functions are not assured unless these assumptions are satisfied.

Table 4-1 Assumptions

Designation	Definition
A.PHYSICAL	Physical security, commensurate with the value of the TOE and the data it stores or processes, is assumed to be provided by the environment.
A.NETWORK	The Operational Environment is assumed to protect the TOE from direct, public access to its LAN interface.
A.TRUSTED_ADMIN	TOE Administrators are trusted to administer the TOE according to site security policies.
A.TRAINED_USERS	Authorized Users are trained to use the TOE according to site security policies.

4.2 Environmental Assumptions

Figure 4-1 shows the operational environment assumed for the TOE. The TOE is installed in a general office and used in an environment connected to the public telephone line and a LAN which is the internal network of the organization. Users operate the control panel of the TOE or a client PC connected to LAN to use the TOE.

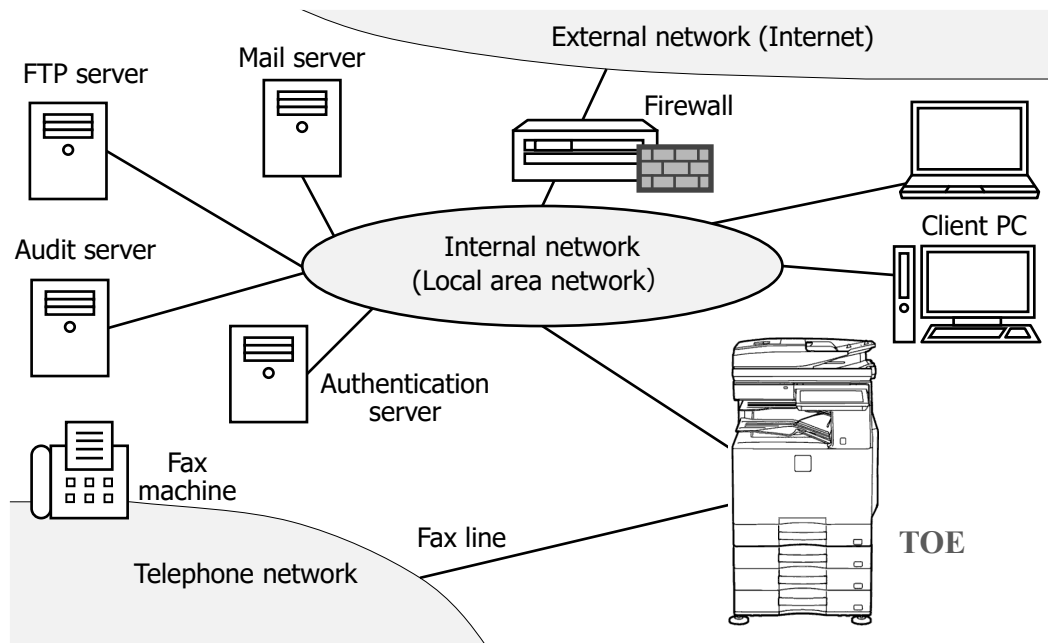


Figure 4-1 Operational Environment of the TOE

The operational environment of the TOE consists of the following components.

(1) Client PC

It is a general PC used by users. The following software is required.

- OS: Windows 10
- Printer Driver:

The sales area of main unit is Japan:

SHARP <model number of main unit> SPDL2 Driver 02.01.03.16

The sales area of main unit is other than Japan:

SHARP <model number of main unit> PCL6 Driver 02.01.03.16

- Web browser: Microsoft Edge 103

(2) Audit Server

It is an audit server to store the audit log generated by the TOE. It must use the syslog protocol and support TLS 1.2.

Installation of this server is mandatory. rsyslog 8.24.0 was used in this evaluation.

(3) Mail Server

A mail server is used to send user document data as an E-mail attachment from the TOE. It must support TLS 1.2.

Postfix ver.2.10.1 was used in this evaluation.

(4) FTP Server

A FTP server is used to send user document data from the TOE. It must support TLS 1.2.

Microsoft Internet Information Services ver.10.0.19041.1586 that is standard server for Windows 10 was used in this evaluation.

(5) Authentication Server

In the case of "external authentication method" shown in "Identification and authentication function" in Section 5.1.1, an authentication server which supports TLS 1.2 and of which authentication protocol is LDAP authentication method is required.

openLDAP ver2.4.44 was used in this evaluation.

It should be noted that the reliability of the hardware and the software other than the TOE shown in this configuration is outside the scope of this evaluation. Those are assumed to be trustworthy.

4.3 Clarification of Scope

There are the following restrictions on the functions provided by the TOE or ensured by this evaluation.

1) Servers and client PCs

Administrators are responsible for operating servers and client PCs cooperating with the TOE securely.

5 Architectural Information

This chapter explains the scope and the main components of the TOE.

5.1 TOE Boundary and Components

Figure 5-1 shows the composition of the TOE. In Figure 5-1, the TOE is the part described as "TOE" in the figure and is the entire MFD with the necessary option.

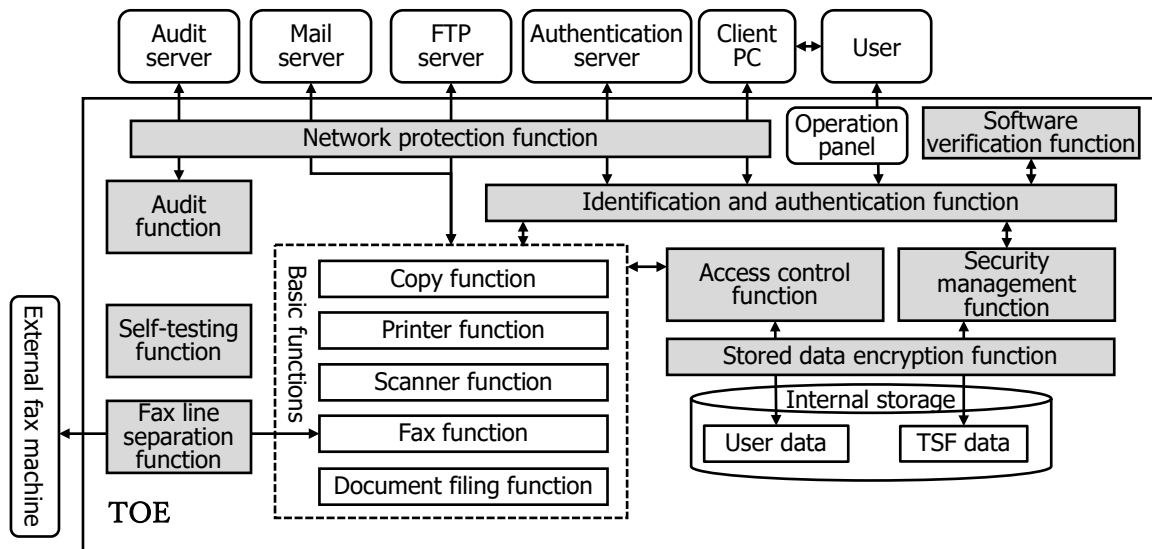


Figure 5-1 TOE boundary

The functions provided by the TOE consist of basic functions of the MFD and security functions. In Figure 5-1, the colored parts in the TOE are security functions, and the other functions in the TOE are basic functions. The security functions of the TOE are described below. For details on the basic MFD functions, see Chapter 11.

(1) Identification and authentication function

This function is a function to identify and authenticate users with their login names and passwords when users use the TOE from the control panel of MFD, Web browser of client PC, or Printer driver of client PC.

This function has the following functionality to reinforce the identification and authentication.

- Restriction on the minimum password length.
- Account lockout after successive authentication failures.
- Termination of the session if there is no operation for a certain time after the

successful authentication.

(2) Access control function

This function is a function to control the access to the user data when users operate the basic functions of the MFD on them.

The access control is performed based on the owner information of the user data and on the user's identification information and role.

(3) Stored data encryption function

This function is a function to encrypt the data stored in the TOE. The encryption of the stored data uses AES CBC mode with a 256-bit key.

Encryption keys are generated using a random bit generator with enough entropy that is difficult to guess.

(4) Network protection function

This function is a function to protect communication data between the TOE and IT devices using encryption communication protocol, TLS 1.2.

Encryption keys are generated using a random bit generator with enough entropy that is difficult to guess.

(5) Security management function

This function is a function to restrict the setting, etc. of the security functions to administrators.

However, general users can inquire about their login names and authority groups, and change their passwords.

(6) Audit function

This function is a function to generate audit logs on audit events relevant to the security functions and send them to an audit log server.

The audit data generated by the TOE is encrypted and stored in the TOE until it is successfully transmitted to the audit server. In the TOE, it is possible to store 40,000 audit data. The audit data generated newly in excess of 40,000 is not stored but is discarded.

(7) Software verification function

This function is a function to verify the digital signature of new firmware when the firmware is updated.

(8) Self-testing function

This function is a function to perform the entropy source health test of the random number generator and the known answer test of the encryption algorithm, and confirm that the firmware is not corrupted at start-up of the TOE.

(9) Fax line separation function

This function is a function to separate the Public Switched Telephone Network (PSTN) and the LAN. The use of the PSTN is limited to fax and no other communication is possible.

5.2 IT Environment

The TOE communicates with servers and client PCs via LAN.

The function of the TOE described in "(4) Network protection function" works in cooperation with those IT devices and uses the following protocols:

- Client PC (Web browser): HTTP over TLS
- Client PC (Printer driver): IPP over TLS
- Audit server: syslog over TLS
- Mail server: SMTP over TLS
- FTP server: FTP over TLS
- Authentication server: LDAP over TLS

6 Documentation

The identification of the guidance documents of the TOE is listed in Table 6-1 and Table 6-2. TOE users are required to fully understand and comply with the following documents in order to satisfy the assumptions.

Table 6-1 Guidance (Japanese version)

Name	Version
スタートガイド	TINSJ5492FCZZ KS2
かんたん操作ガイド	bp70m65_qsg_01a_ja
ユーザーズマニュアル	bp70m65_usr_01a_ja
ソフトウェアセットアップガイド	software-setup_a30-01a_ja
取扱説明書 データセキュリティキット	bp70C65_dk1_01a_ja
注意書 データセキュリティキット	Q1-1
Protection Profile for Hardcopy Devices適合状態で 本製品をご利用のお客様へ	q1-2

Table 6-2 Guidance (English version)

Name	Version
Start Guide	TINSE5493FCZZ KS1
Quick Start Guide	bp70m65_qsg_01a_us
User's Manual	bp70m65_usr_01a_us
Software Setup Guide	software-setup_a30-02a_en
Data Security Kit Operation Guide	bp70C65_dk1_01a_en
Data Security Kit Notice	Q1-1
How to set up this product to be the "Protection Profile for Hardcopy Devices" compliant	q1-2

7 Evaluation conducted by Evaluation Facility and Results

7.1 Evaluation Facility

Information Technology Security Center, Evaluation Department that conducted the evaluation as the Evaluation Facility is approved under JISEC and is accredited by NITE (National Institute of Technology and Evaluation), the Accreditation Body, which joins Mutual Recognition Arrangement of ILAC (International Laboratory Accreditation Cooperation). It is periodically confirmed that the above Evaluation Facility meets the requirements on the appropriateness of the management and evaluators for maintaining the quality of evaluation.

7.2 Evaluation Approach

The evaluation was conducted in accordance with the assurance requirements in the CC Part 3 required by the Conformance PP using the evaluation methods prescribed in the CEM and the assurance activities of the Conformance PP.

Details for evaluation activities were reported in the Evaluation Technical Report. The Evaluation Technical Report explains the summary of the TOE as well as the content of the evaluation and the verdict for each work unit in the CEM and assurance activity of the Conformance PP.

7.3 Overview of Evaluation Activity

The history of the evaluation conducted is described in the Evaluation Technical Report as follows.

The evaluation started in 2022-07 and concluded upon completion of the Evaluation Technical Report dated 2023-01. The Evaluation Facility received a full set of evaluation deliverables necessary for evaluation provided by the developer, and examined the evidence in relation to a series of evaluation conducted. Furthermore, the evaluator conducted the evaluator testing at the developer site in 2022-09.

Concerns found in evaluation activities were issued as the Observation Reports and reported to the developer. Those concerns were reviewed by the developer, and all the concerns were solved eventually.

Concerns in the evaluation process that the Certification Body found were described as the certification oversight reviews and sent to the Evaluation Facility.

After the Evaluation Facility and the developer examined the concerns, those were reflected in the Evaluation Technical Report.

7.4 IT Product Testing

As the verification results of the evidence presented in the evaluation process, the evaluator performed the evaluator independent testing to ensure that the security functions of the product are accurately implemented and the evaluator penetration testing based on the vulnerability assessment.

7.4.1 Developer Testing

The developer testing is not included in the assurance requirements of this evaluation.

7.4.2 Evaluator Independent Testing

The evaluator conducted evaluator independent testing (hereinafter referred to as "independent testing") based on the evidence presented during the evaluation to ensure that the security functions of the product are accurately implemented. The independent testing performed by the evaluator is explained as follows.

1) Independent Testing Environment

The environment for the independent testing is based on the operational environment of the TOE shown in Figure 4-1. The components used in the independent testing environment are listed in Table 7-1.

Table 7-1 Components of Independent Testing

Components	Description
TOE	<ul style="list-style-type: none"> - For Japan - SHARP BP-70M65 fax-standard PS-optional model with BP-FR12U and MX-PK13 Version: 0240Q100 - For other countries - SHARP BP-70M45 fax-optional PS-standard model with BP-FR12U and BP-FX11 Version: 0240Q100 - SHARP BP-50M26 fax-optional PS-optional model with BP-FR12U, MX-PK13 and BP-FX11 Version: 0240Q100
Audit server	rsyslog ver.8.24.0
Mail server	Postfix ver.2.10.1
FTP server	Microsoft Internet Information Services ver.10.0.19041.1586
Authentication server	openLDAP ver.2.4.44
Client PC	OS : Windows 10 Web browser : Microsoft Edge 103

	Printer Driver:	
	- SHARP BP-70M65 SPDL2	02.01.03.16
	- SHARP BP-70M45 PCL6	02.01.03.16
	- SHARP BP-50M26 PCL6	02.01.03.16

There are following differences between the configuration of the independent testing and the TOE configuration identified in the ST. The evaluator determined that there are no problems with those differences and that the security functions of the TOE configuration identified in the ST can be considered properly tested.

(1) Tested models

In the models of the TOE described in Chapter 2 "TOE identification," there are multiple models due to the following differences:

- Differences in Fax and Postscript Configurations (Standard or Optional)
- Difference in printing speed
- Difference in display language

The evaluator determined that the security functions of all the models of the TOE can be considered to have been tested by testing the representative three models considering the above differences, because the security functions of each models are the same.

(2) Using a modified firmware for testing

In the independent testing, a firmware modified for testing was used to verify the encryption functions instead of the firmware of the TOE. The evaluator determined that the testing on the modified firmware is valid because its modules of the encryption functions are the same as that of the TOE, and the modification for testing does not affect the encryption functions.

(3) Using additional testing tools

In the independent testing, some testing tools were used to confirm and alter the communication data and to confirm the encryption functions. The validity of those testing tools was confirmed by the evaluator.

2) Summary of the Independent Testing

A summary of the independent testing is as follows.

a. Viewpoints of the Independent Testing

The viewpoints of the independent testing devised by the evaluator based on the requirements of the Conformance PP and on the evaluation documentation submitted for evaluation are shown below.

<Viewpoints of the Independent Testing>

1. Confirm security functions for each Security Functional Requirement (SFR).
2. Confirm that the implementation of the cryptographic algorithms is correct.

b. Independent Testing Outline

An outline of the independent testing that the evaluator performed is as follows.

<Independent Testing Approach>

The behavior of the TOE for inputs using the control panel of the TOE, the client PC and the testing tools was confirmed by following means:

- If the behavior can be confirmed from the external interfaces of the TOE, the external interfaces of the TOE are used.
- If the behavior cannot be confirmed from the external interfaces of the TOE, the firmware for testing is used.

<Content of the Performed Independent Testing>

The independent testing was performed on 35 items by the evaluator.

Table 7-2 shows contents of the independent testing corresponding to the viewpoints.

Table 7-2 Content of the Performed Independent Testing

Viewpoint	Outline of the Independent Testing
1	<p>Confirmation of security functions</p> <p>Confirm that all security functions work as the specification with the test items created based on the assurance activities of the Conformance PP for each SFR or the requirements of the SFR.</p>
2	<p>Confirmation of implementation of cryptographic algorithms</p> <p>Confirm the following cryptographic algorithms are implemented as the specification using the test program installed in the TOE.</p> <ul style="list-style-type: none"> - RSA (key generation, signature generation/verification) - ECDSA (signature verification) - AES-ECB-128, AES-ECB-256, AES-CBC-128, AES-CBC-256, AES-GCM-128, AES-GCM-256 - SHA-1, SHA-256, SHA-384, SHA-512 - HMAC-SHA-1, HMAC-SHA-256, HMAC-SHA-384 - CTR_DRBG

c. Result

All the independent testing performed by the evaluator was correctly completed, and the evaluator confirmed the behavior of the TOE. The evaluator confirmed consistencies between the expected behavior and all the testing results.

7.4.3 Evaluator Penetration Testing

The evaluator devised and performed the evaluator penetration testing (hereinafter referred to as the "penetration testing") on the potentially exploitable vulnerabilities of concern under the assumed environment of use and attack level from the evidence presented in the process of the evaluation. The penetration testing performed by the evaluator is explained as follows.

(1) Summary of the Penetration Testing

A summary of the penetration testing performed by the evaluator is as follows.

a. Vulnerability of Concern

The evaluator searched into the provided documentation and the publicly available information for the potential vulnerabilities, and then identified the following vulnerabilities which require the penetration testing.

1. There is a concern that unintended network ports of the TOE may be open, and known vulnerabilities may exist in the network services running on the TOE.
2. There is a concern that known vulnerabilities may exist in the Web interface of the TOE.
3. There is a concern that known vulnerabilities may exist in the print processing of the TOE.
4. There is a concern that the identification and authentication function may be bypassed by the malicious input from the control panel of the TOE, printer driver or Web interface.
5. When the TOE operates as a TLS client, there may be vulnerabilities in the verification of the server certificate of the communication destination.

b. Penetration Testing Outline

The evaluator performed the following penetration testing to identify potentially exploitable vulnerabilities.

<Penetration Testing Environment>

The penetration testing was performed in the same environment as that of the evaluator independent testing, except for the additional tools for penetration testing. Table 7-3 shows the tools used in the penetration testing.

Table 7-3 Penetration Testing Tools

Name	Outline and Purpose of Use
Nmap 7.9.2	A tool to detect available network service ports.
Nessus 10.2.0	A tool to detect known vulnerabilities at network ports.
OWASP ZAP 2.11.1 Active scanner rules(beta) v27.0.0 Added	A tool to detect known vulnerabilities at Web application.
PRET 0.40	A tool to inspect various vulnerabilities in a printing processing.

<Content of the Performed Penetration Testing>

Table 7-4 shows contents of the penetration testing corresponding to the vulnerabilities of concern.

Table 7-4 Content of the Performed Penetration Testing

Vulnerability	Penetration Testing Outline
1	<ul style="list-style-type: none"> - Confirm that unexpected network ports of the TOE are not open using Nmap. - Confirm that there are no known vulnerabilities in the network services running on the TOE using Nessus.
2	<ul style="list-style-type: none"> - Confirm that there are no known vulnerabilities in the Web interface of the TOE using OWASP ZAP.
3	<ul style="list-style-type: none"> - Confirm that there are no known vulnerabilities in print processing of the TOE using PRET and exploit codes obtained on the Internet.
4	<ul style="list-style-type: none"> - Confirm that unexpected behaviour is not observed even if the character strings that may cause unauthorised processing are input in the control panel, printer driver and Web interface.
5	<ul style="list-style-type: none"> - Confirm that TOE has correctly performed the verification of the TLS server certificate in mail processing.

c. Result

In the penetration testing performed by the evaluator, the evaluator did not find any exploitable vulnerabilities that attackers who have the assumed attack potential could exploit.

7.5 Evaluated Configuration

The conditions of the TOE configuration, that are prerequisites for this evaluation, are as described in the guidance documents listed in Chapter 6. In order to use the TOE securely as ensured by the evaluation, the TOE must be set as described in the guidance documents. Different settings are not subject to assurance by this evaluation.

7.6 Evaluation Results

The evaluator had concluded that the TOE satisfies all work units prescribed in the CEM and all assurance activities in the Conformance PP as per the Evaluation Technical Report.

In the evaluation, the following were confirmed.

- PP Conformance:

Protection Profile for Hardcopy Devices 1.0 dated September 10, 2015

Protection Profile for Hardcopy Devices - v1.0 Errata #1, June 2017

Guideline for Certification Application with HCD-PP Conformance [16]

Treatment regarding FCS_RBG_EXT.1 Test

Treatment regarding FCS_TLS_EXT.1.1 Test

- Security functional requirements: Common Criteria Part 2 Extended
- Security assurance requirements: Common Criteria Part 3 Conformant

As a result of the evaluation, the verdict "PASS" was confirmed for the following assurance components required by the Conformance PP.

ASE_INT.1, ASE_CCL.1, ASE_SPD.1, ASE_OBJ.1, ASE_ECD.1, ASE_REQ.1,
ASE_TSS.1, ADV_FSP.1, AGD_OPE.1, AGD_PRE.1, ALC_CMC.1, ALC_CMS.1,
ATE_IND.1, AVA_VAN.1

The result of the evaluation is only applied to those which are composed by the TOE corresponding to the identification described in the Chapter 2.

7.7 Evaluator Comments/Recommendations

There is no evaluator recommendation to be addressed to procurement entities.

8 Certification

Based on the evidence submitted by the Evaluation Facility during the evaluation process, the Certification Body has performed certification by checking that the following requirements are satisfied:

1. Contents pointed out in the Observation Reports shall be adequate.
2. Contents pointed out in the Observation Reports shall properly be solved.
3. The submitted documentation was sampled, the content was examined, and the related work units in the CEM and assurance activities of the Conformance PP shall be evaluated as presented in the Evaluation Technical Report.
4. Rationale of the evaluation verdict by the evaluator presented in the Evaluation Technical Report shall be adequate.
5. The evaluator's evaluation methodology presented in the Evaluation Technical Report shall conform to the CEM and the assurance activities of the Conformance PP.

Concerns found in the certification process were prepared as the certification oversight reviews, and they were sent to the Evaluation Facility. The Certification Body confirmed such concerns pointed out in the certification oversight reviews were solved in the ST and the Evaluation Technical Report and issued this Certification Report.

8.1 Certification Result

As a result of verification of the Evaluation Technical Report, Observation Report and related evaluation documentation submitted by the Evaluation Facility, the Certification Body determined that the TOE evaluation satisfies the assurance requirements required by the Conformance PP.

8.2 Recommendations

Procurement entities who are interested in the TOE are advised to refer "4.2 Environmental Assumptions" and "7.5 Evaluated Configuration" to make sure the scope of the evaluation and the operational requirements of the TOE meet the operational conditions assumed by each user.

If the transmission of the audit data to the audit server fails, the warning messages are displayed on the operation panel and the web page. The TOE tries to retransmit, but the operator needs to be careful about the warning messages.

9 Annexes

There is no annex.

10 Security Target

The Security Target [12] of the TOE is provided as a separate document from this Certification Report.

Title: SHARP BP-70M65 / 70M55 / 70M45 fax-standard PS-optional model with BP-FR12U and MX-PK13; BP-70M65 / 70M55 / 70M45 / 70M36 / 70M31 fax-optional PS-standard model with BP-FR12U and BP-FX11; and BP-50M65 / 50M55 / 50M45 / 50M36 / 50M31 / 50M26 fax-optional PS-optional model with BP-FR12U, MX-PK13 and BP-FX11 Security Target

Version: 1.02

Publication Date: 2023-01-18

Author: SHARP CORPORATION

11 Glossary

The abbreviations relating to the CC used in this report are listed below.

CC	Common Criteria for Information Technology Security Evaluation
CEM	Common Methodology for Information Technology Security Evaluation
PP	Protection Profile
SFR	Security Functional Requirement
ST	Security Target
TOE	Target of Evaluation
TSF	TOE Security Functionality

The abbreviations relating to the TOE used in this report are listed below.

MFD	Multifunction Device
PSTN	Public Switched Telephone Network

The abbreviations relating to information technology used in this report are listed below.

AES	Advanced Encryption Standard
CBC	Cipher Block Chaining
CTR_DRBG	Counter (CTR) mode block cipher algorithm DRBG
DRBG	Deterministic Random Bit Generator
ECB	Electronic Codebook
ECDSA	Elliptic Curve Digital Signature Algorithm
FTP	File Transfer Protocol
GCM	Galois/ Counter Mode
HMAC	Keyed-Hash Message Authentication Code
HTTP	Hypertext Transfer Protocol
IPP	Internet Printing Protocol
LDAP	Lightweight Directory Access Protocol
RSA	Rivest Shamir Adleman
SHA	Secure Hash Algorithm
SMTP	Simple Mail Transfer Protocol
TLS	Transport Layer Security

The definitions of terms used in this report are listed below.

Field Replaceable (Unit)	The smallest subassembly that can be swapped in the field to repair a fault.
Hardcopy Device	A system producing or utilizing a physical embodiment of an electronic document or image. These systems include printers, scanners, fax machines, digital copiers, MFPs (multifunction peripherals), MFDs (multifunction devices), “all-in-ones” and other similar products.
Copy function	It is a function to copy and print the user document data scanned from paper documents by user's operation from the operation panel.
Scanner function	It is a function to scan paper documents and send the scanned user document data to the mail server and FTP server by user's operation from the operation panel.
Document filing function	It is a function to store the user document data in the internal storage of the TOE at the same time with the copy function, etc., and to print the stored user document data by user's operation from the operation panel or from the client PC via the LAN.
Fax function	It is a function to send and receive the document data to and from external fax machines conforming to the G3 standard connected by the PSTN. It consists of the fax transmission function, in which paper documents are scanned and the scanned document data are sent to the external fax machine, and the fax reception function, in which document data sent from an external fax machine are received and printed by user's operation.
Printer function	It is a function to receive the user document data via the LAN from the printer driver of the client PC and print it by user's operation from the operation panel.
Assurance Activity	Evaluation work to be performed by an evaluator in order to conform to a PP. It is a supplement of the CEM. In the case of the Conformance PP [14], it is described in the Conformance PP.

12 Bibliography

- [1] IT Security Evaluation and Certification Scheme Document, October 2020, Information-technology Promotion Agency, Japan, CCS-01
- [2] Requirements for IT Security Certification, October 2020, Information-technology Promotion Agency, Japan, CCM-02
- [3] Requirements for Approval of IT Security Evaluation Facility, October 2021, Information-technology Promotion Agency, Japan, CCM-03
- [4] Common Criteria for Information Technology Security Evaluation Part 1: Introduction and general model, Version 3.1 Revision 5, April 2017, CCMB-2017-04-001
- [5] Common Criteria for Information Technology Security Evaluation Part 2: Security functional components, Version 3.1 Revision 5, April 2017, CCMB-2017-04-002
- [6] Common Criteria for Information Technology Security Evaluation Part 3: Security assurance components, Version 3.1 Revision 5, April 2017, CCMB-2017-04-003
- [7] Common Criteria for Information Technology Security Evaluation Part 1: Introduction and general model, Version 3.1 Revision 5, April 2017, CCMB-2017-04-001, (Japanese Version 1.0, July 2017)
- [8] Common Criteria for Information Technology Security Evaluation Part 2: Security functional components, Version 3.1 Revision 5, April 2017, CCMB-2017-04-002, (Japanese Version 1.0, July 2017)
- [9] Common Criteria for Information Technology Security Evaluation Part 3: Security assurance components, Version 3.1 Revision 5, April 2017, CCMB-2017-04-003, (Japanese Version 1.0, July 2017)
- [10] Common Methodology for Information Technology Security Evaluation: Evaluation methodology, Version 3.1 Revision 5, April 2017, CCMB-2017-04-004
- [11] Common Methodology for Information Technology Security Evaluation: Evaluation methodology, Version 3.1 Revision 5, April 2017, CCMB-2017-04-004, (Japanese Version 1.0, July 2017)
- [12] SHARP BP-70M65 / 70M55 / 70M45 fax-standard PS-optional model with BP-FR12U and MX-PK13; BP-70M65 / 70M55 / 70M45 / 70M36 / 70M31 fax-optional PS-standard model with BP-FR12U and BP-FX11; and BP-50M65 / 50M55 / 50M45 / 50M36 / 50M31 / 50M26 fax-optional PS-optional model with BP-FR12U, MX-PK13 and BP-FX11 Security Target, Version 1.02, January 18, 2023, SHARP CORPORATION
- [13] SHARP CORPORATION SHARP BP-70M65 / 70M55 / 70M45 fax-standard PS-

optional model with BP-FR12U and MX-PK13; BP-70M65 / 70M55 / 70M45 / 70M36 / 70M31 fax-optional PS-standard model with BP-FR12U and BP-FX11; and BP-50M65 / 50M55 / 50M45 / 50M36 / 50M31 / 50M26 fax-optional PS-optional model with BP-FR12U, MX-PK13 and BP-FX11 Evaluation Technical Report, Version 1.2, January 20, 2023, Information Technology Security Center, Evaluation Department

- [14] Protection Profile for Hardcopy Devices 1.0 dated September 10, 2015 (Certification Identification: JISEC-C0553)
- [15] Protection Profile for Hardcopy Devices - v1.0 Errata #1, June 2017
- [16] Guideline for Certification Application with HCD-PP Conformance, Version 1.8, November 11, 2020, Information-technology Promotion Agency, Japan, JISEC-CERT-2020-A18